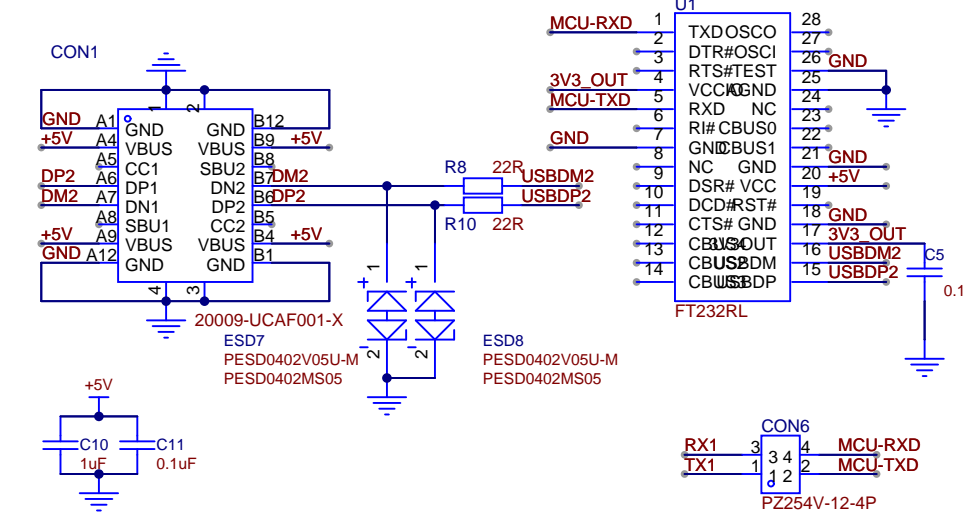
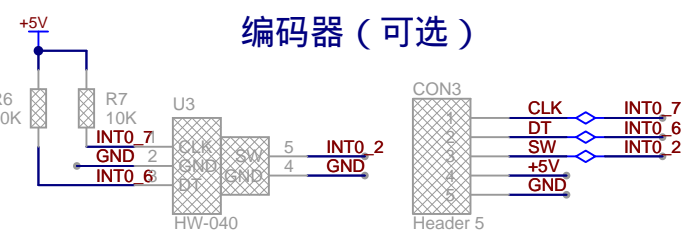


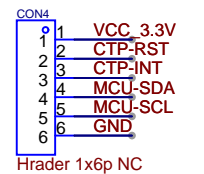
FT232RL (可选)



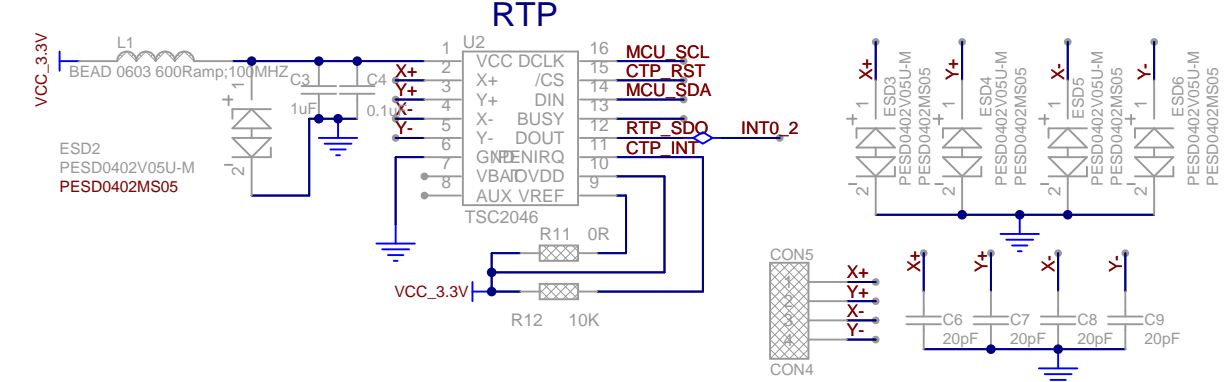
编码器 (可选)



DEBUG (可选)

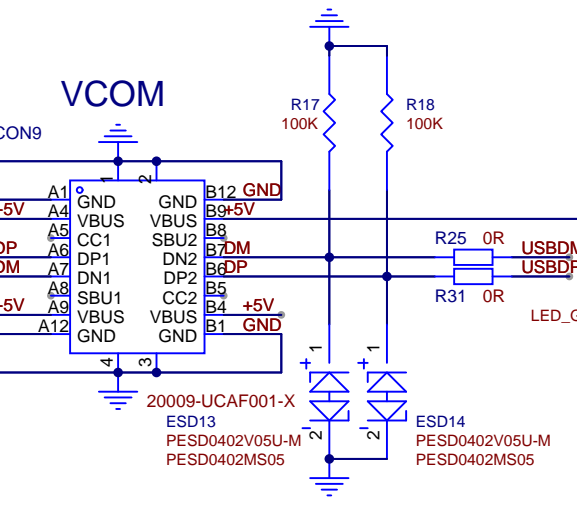
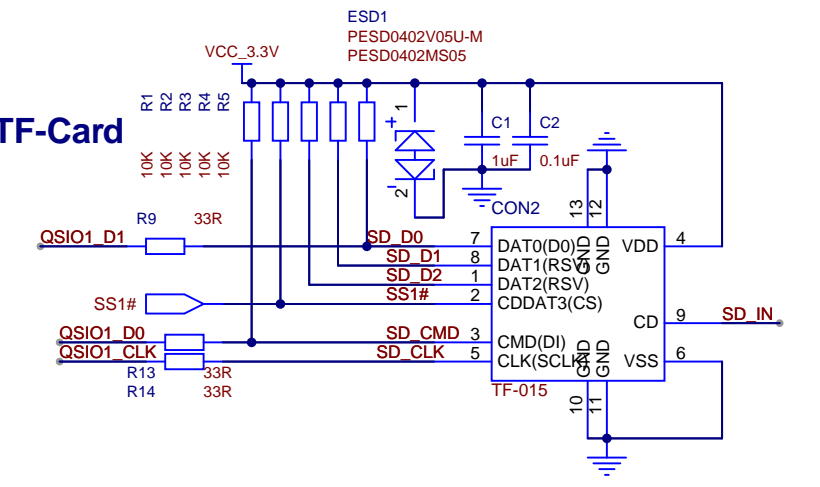


电阻触摸屏接口 (可选)

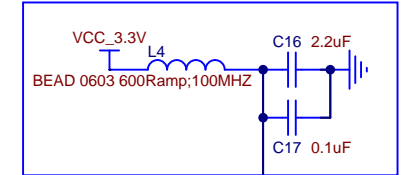


PCB上同时有CTP和RTP电路, 需要在信号线上加隔离电路

TF-Card

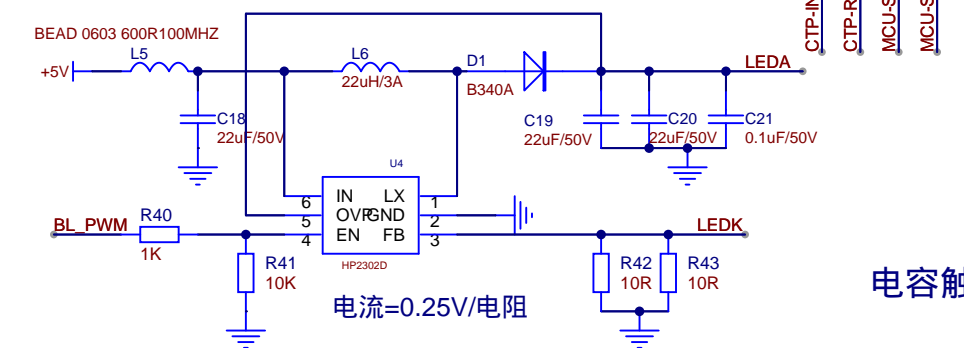


GUI_PLL供电



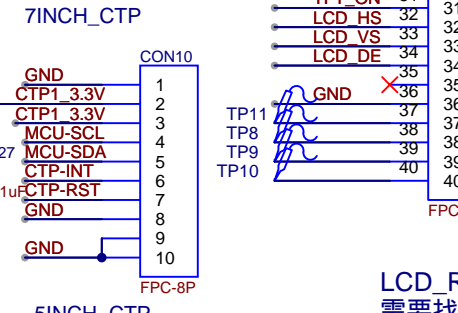
LCD_XI需要提供12MHz晶振, 可以与原有的12MHz晶振并联起来。

背光电路

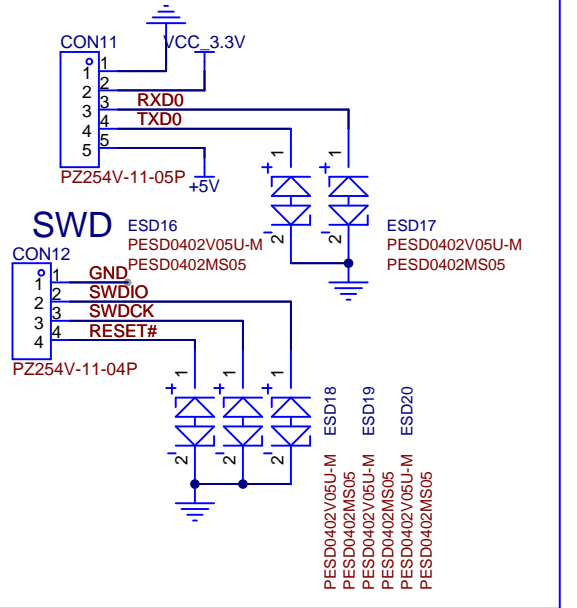


电流=0.25V/电阻

电容触摸屏接口

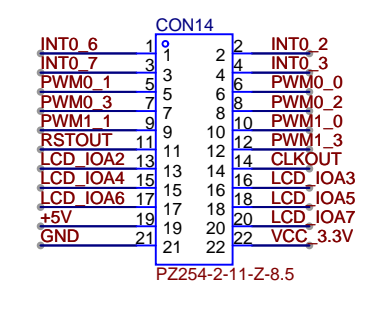


LCD_RST脚不可接到LT7589B的Pin126, 需要找其他空闲的IO口, 建议使用Pin25

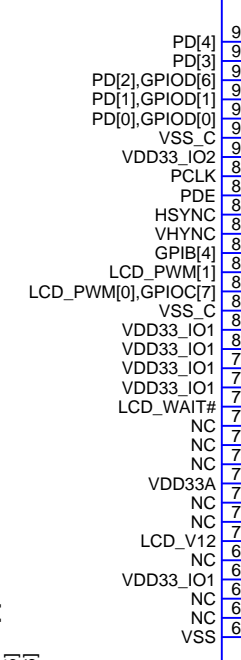


MCU内核供电

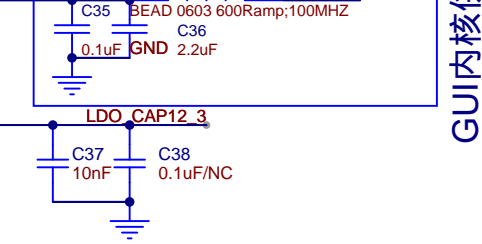
OTHER



U11 LT7589C



GUI内核供电

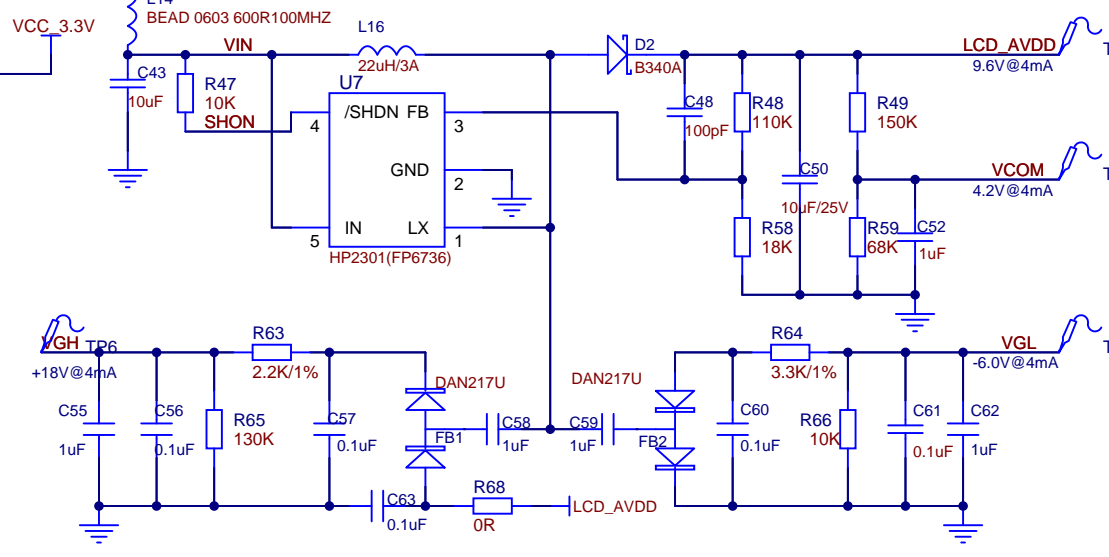


FLASH

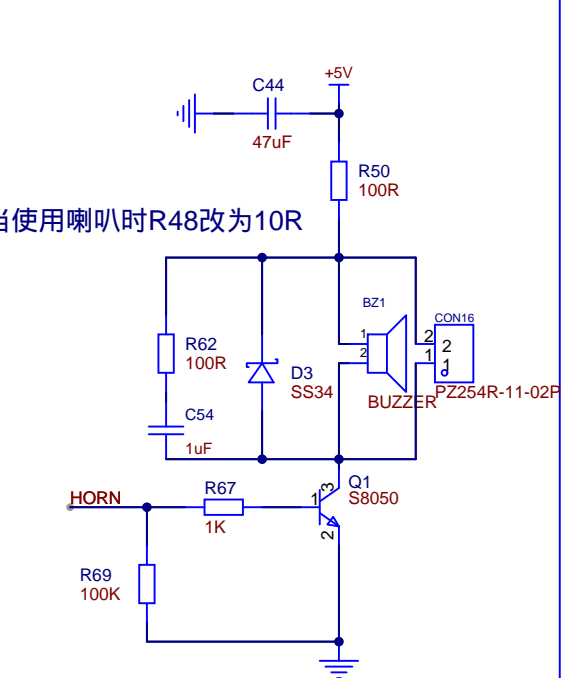


PCB layout时, FLASH应离LT7589尽量近。

7寸 VGH,VHL电路

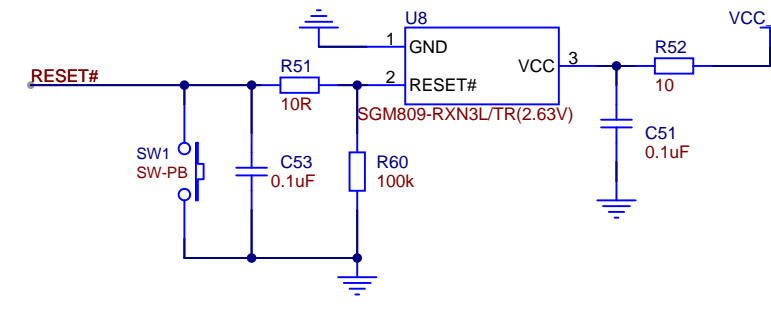


蜂鸣器/喇叭 Beep/SPK



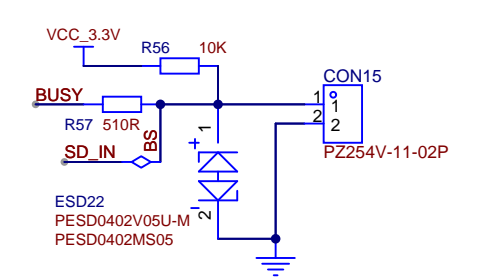
当使用喇叭时R48改为10R

RST电路



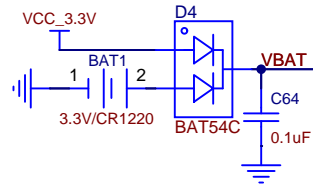
ROMBOOT(Pin48)信号脚上电期间不可为低电平, 需要接上拉电阻! Pin49-Pin54只能做低速的普通IO口。

BUSY



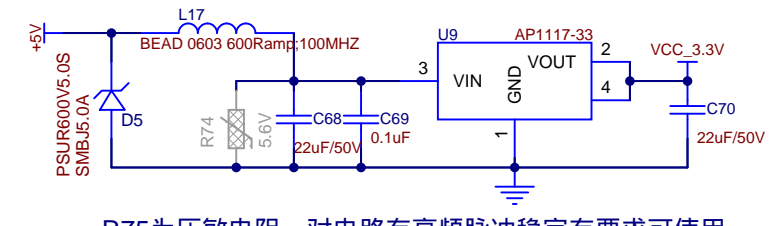
这个是烧录模式判断脚, 需要上拉并引出来。

RTC



软件部分有用到计时功能, 32.768KHz的电路需要加上

5V转3.3V



R75为压敏电阻, 对电路有高频脉冲稳定有要求可使用

Schematic	LT7589C_Demo_V1.3	Update Date	2025-12-16
Page	LT7589C_Demo_V1.3	Create Date	
Drawn		Part Number	
Reviewed			
VER		SIZE	PAGE 1 OF 1
V1.1			Levetop Semiconductor.

