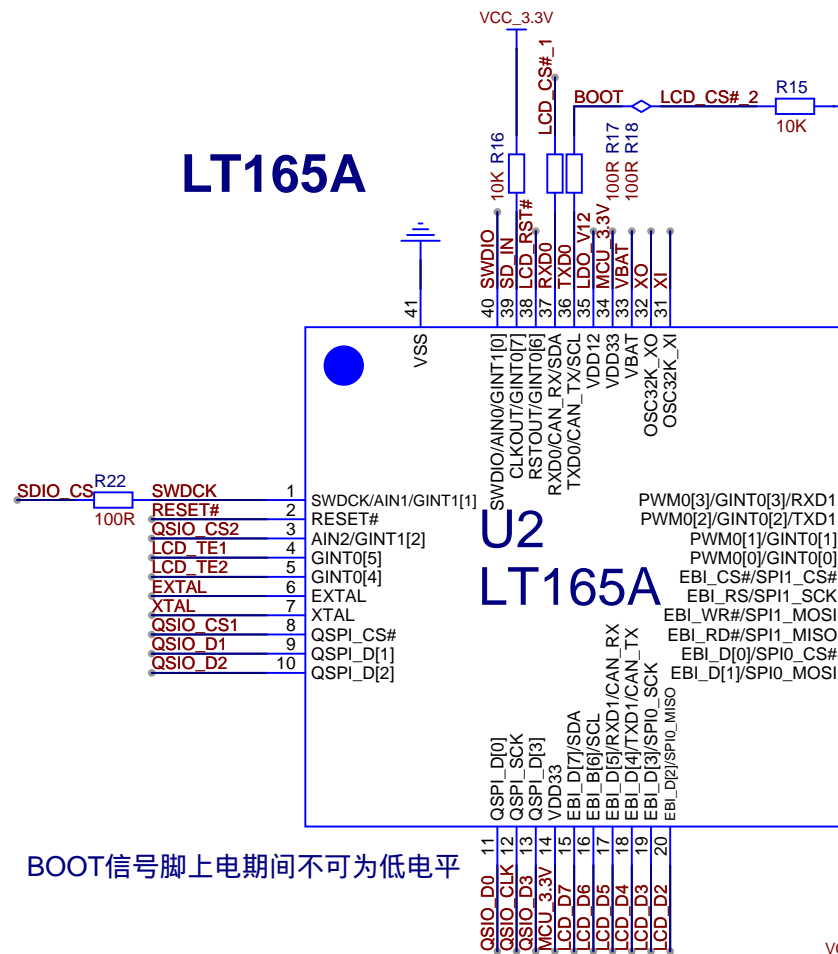
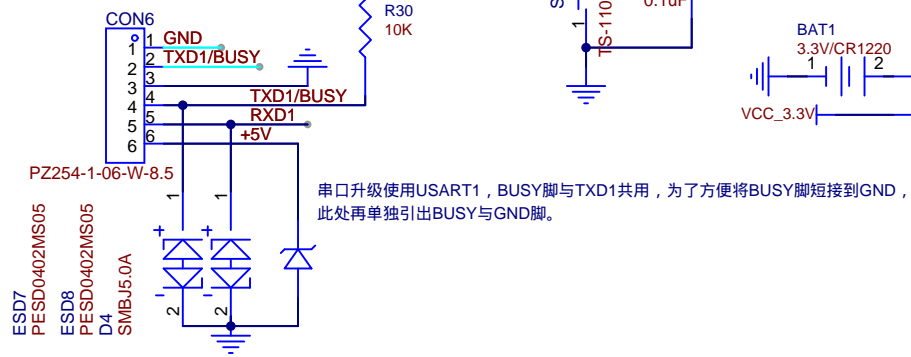


LT165A



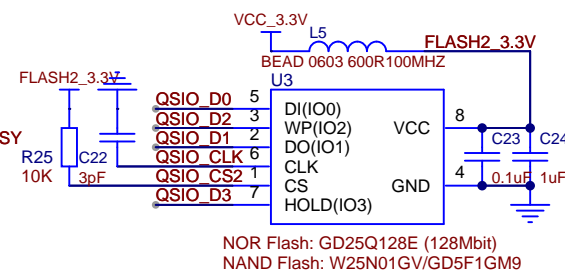
BOOT信号脚上电期间不可为低电平

USART1



串口升级使用USART1，BUSY脚与TXD1共用，为了方便将BUSY脚短接到GND，此处再单独引出BUSY与GND脚。

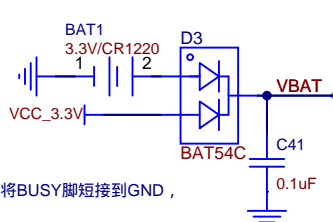
FLASH



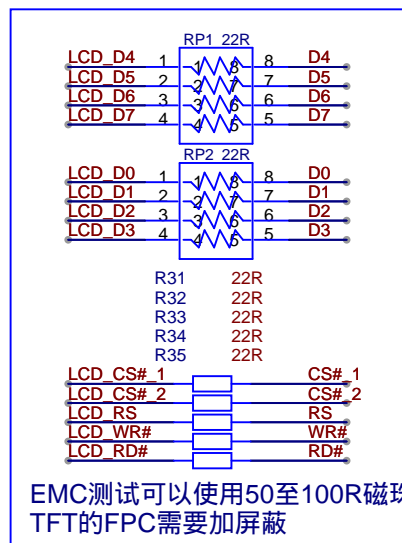
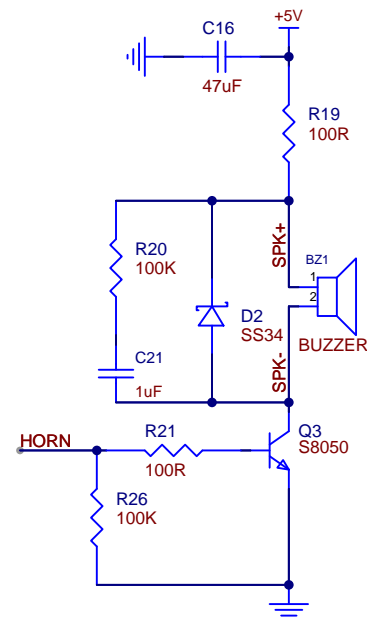
NOR Flash: GD25Q128E (128Mbit)
NAND Flash: W25N01GV/GD5F1GM9

Layout时FLASH应尽量靠近LT165A
CS2需要增加10K上拉

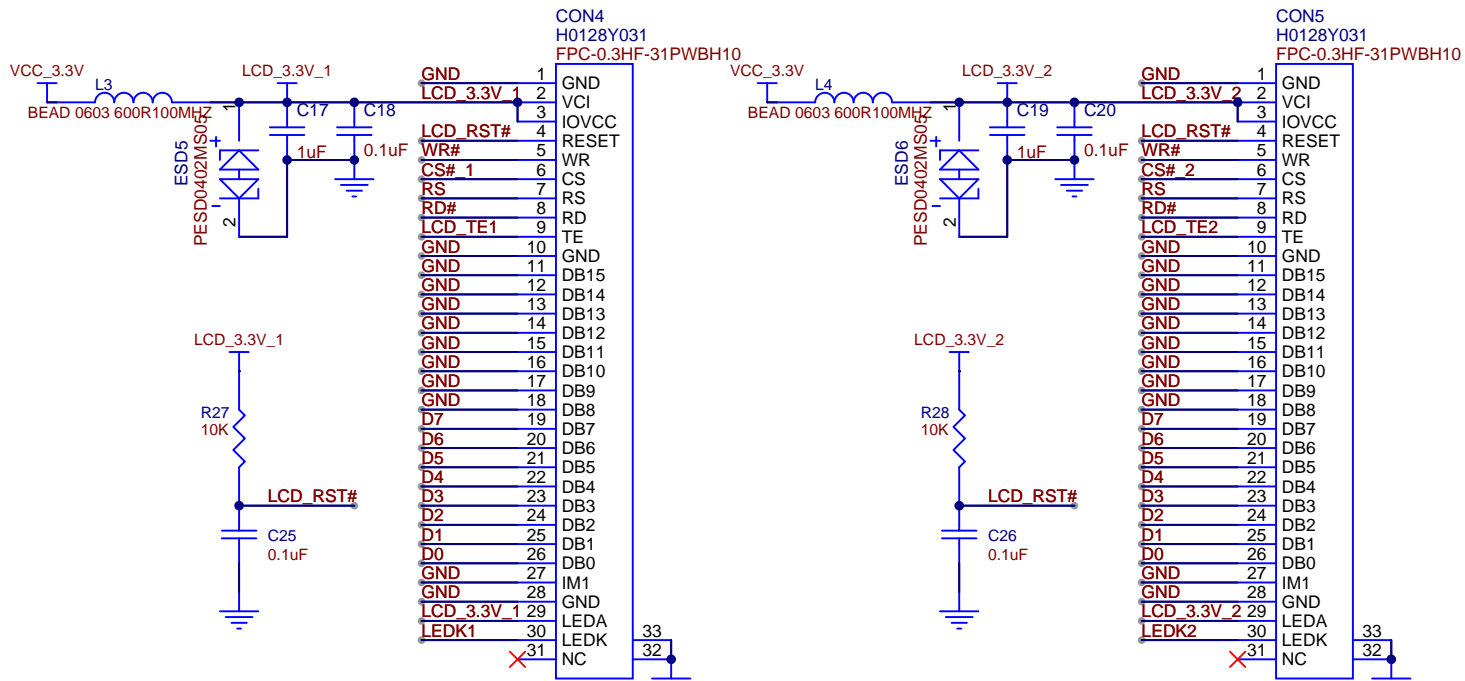
RTC



蜂鸣器 Beep



EMC测试可以使用50至100R磁珠
TFT的FPC需要加屏蔽



Schematic	LT165A机器人眼睛双屏原理图_V1.1	Update Date	2025-11-19
Page	LT165A机器人眼睛双屏原理图_V1.1	Create Date	2023-11-08
Drawn		Part Number	
Reviewed			
		VER	SIZE
		V1.0	
		PAGE	1 OF 1
		Levetop Semiconductor.	

