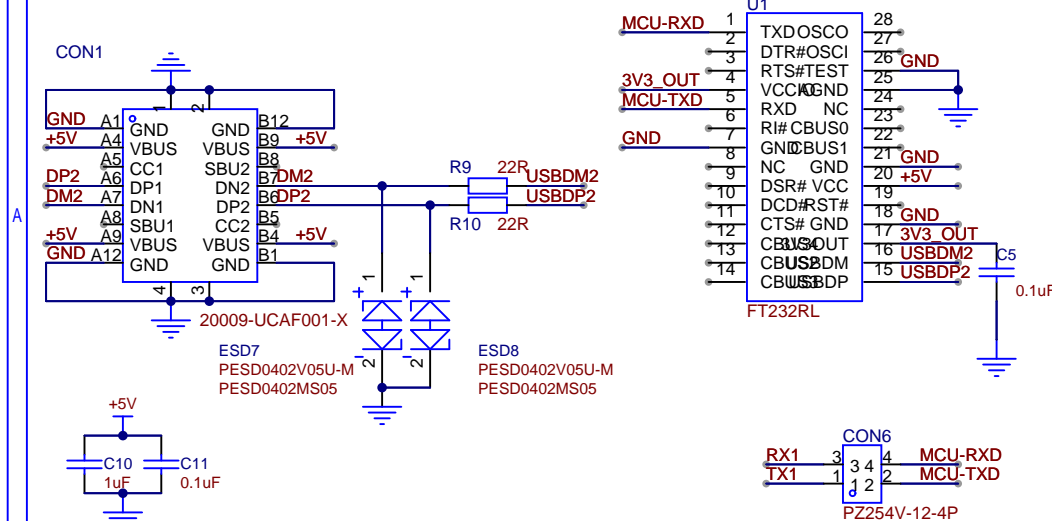
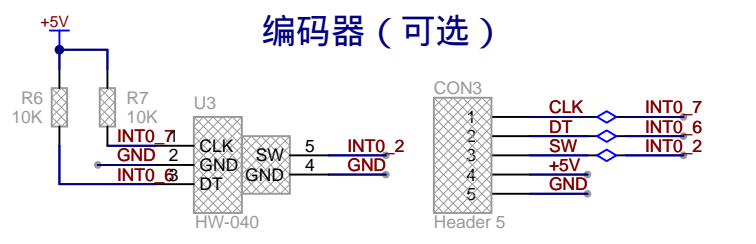


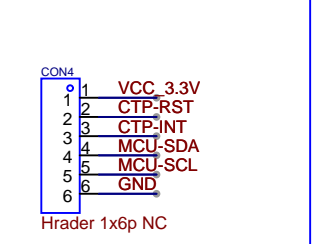
FT232RL (可选)



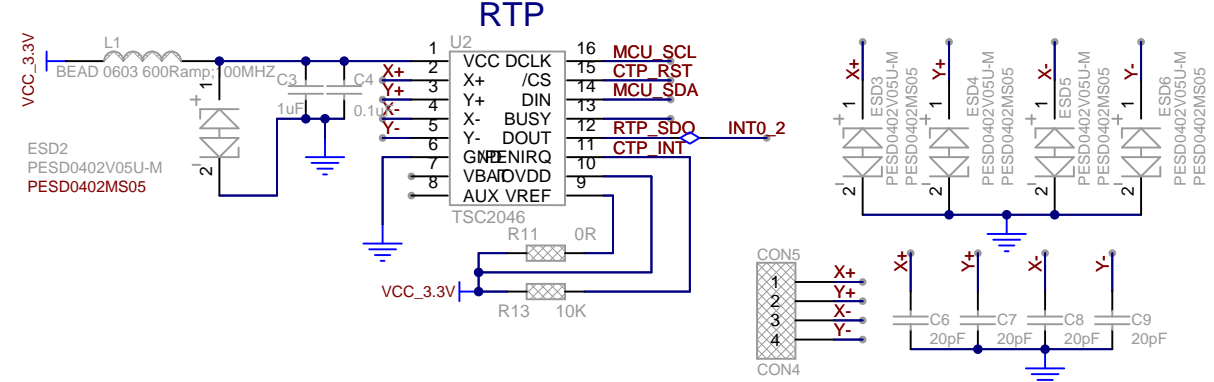
编码器 (可选)



DEBUG (可选)

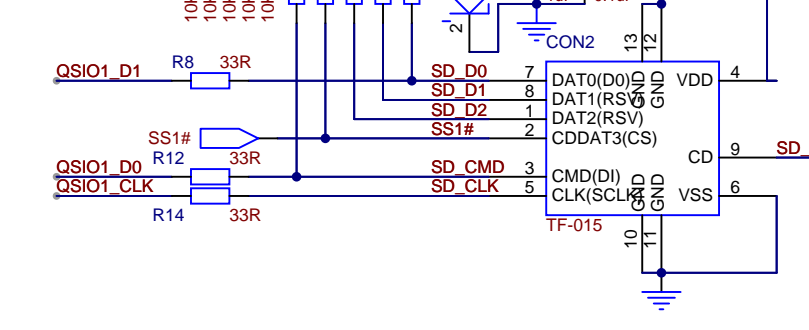


电阻触摸屏接口 (可选)

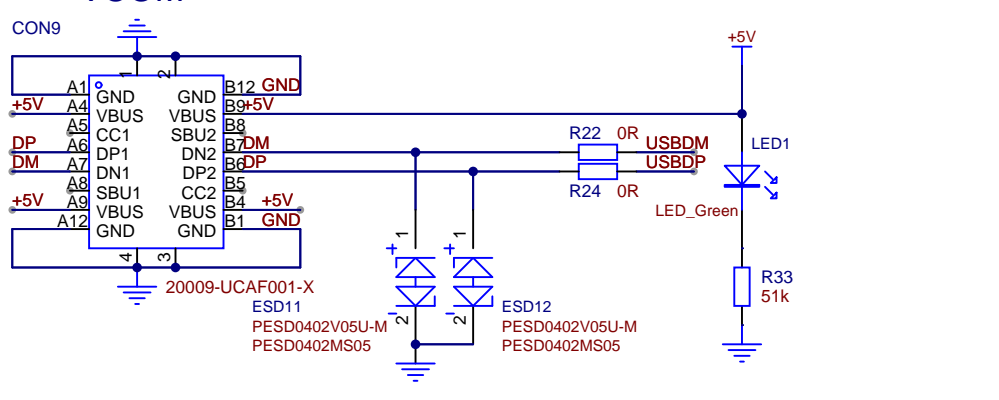


PCB上同时有CTP和RTP电路, 需要在信号线上加隔离电路

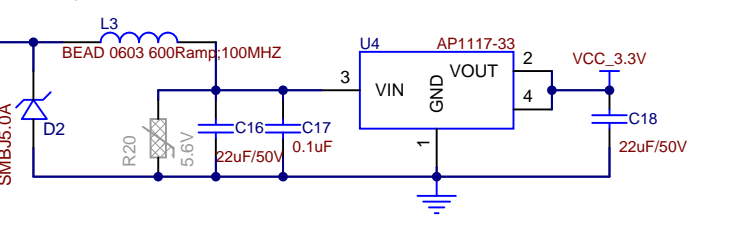
TF-Card



VCOM

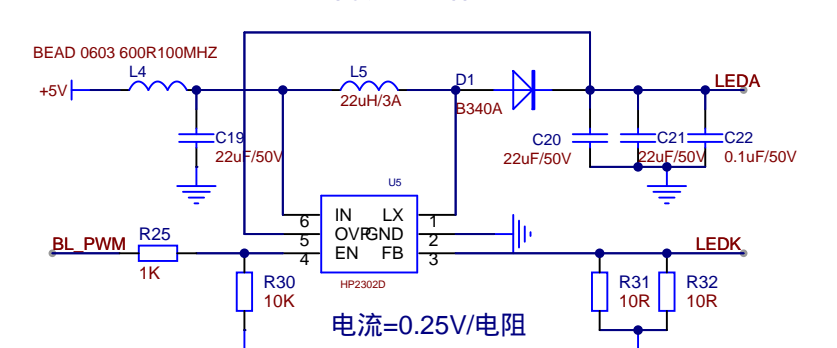


5V转3.3V

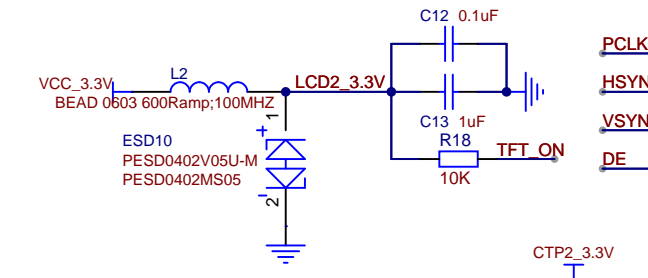


R21为压敏电阻, 对电路有高频脉冲稳定有要求可使用

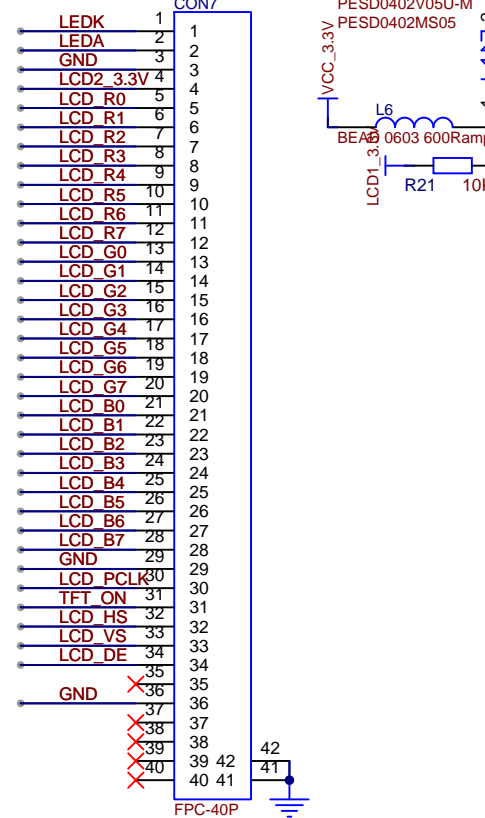
背光电路



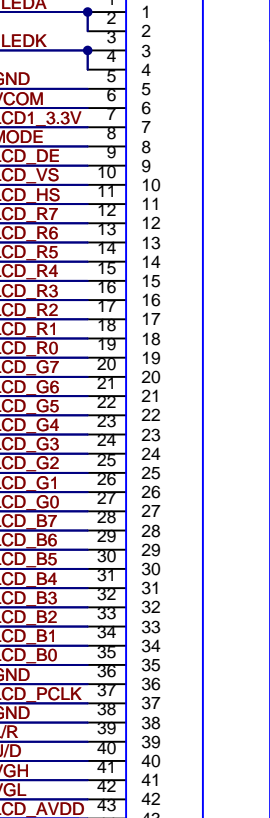
电流=0.25V/电阻



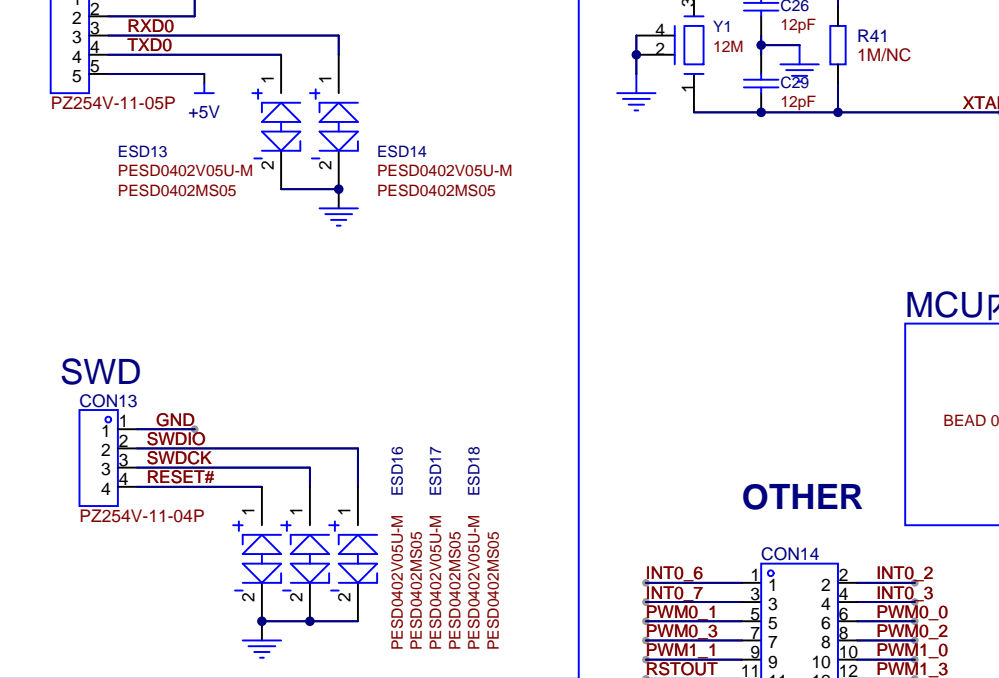
5寸TFT



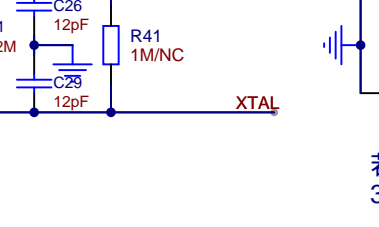
7寸TFT



SWD

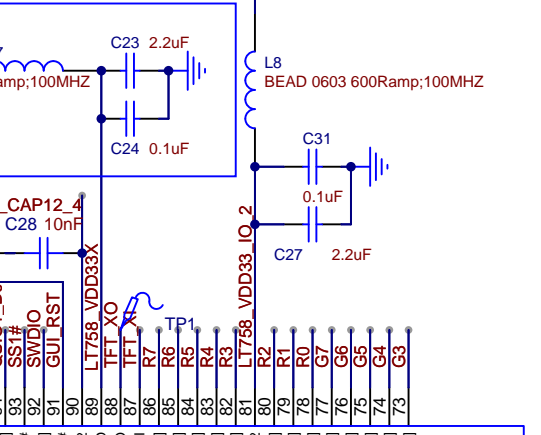


RTC



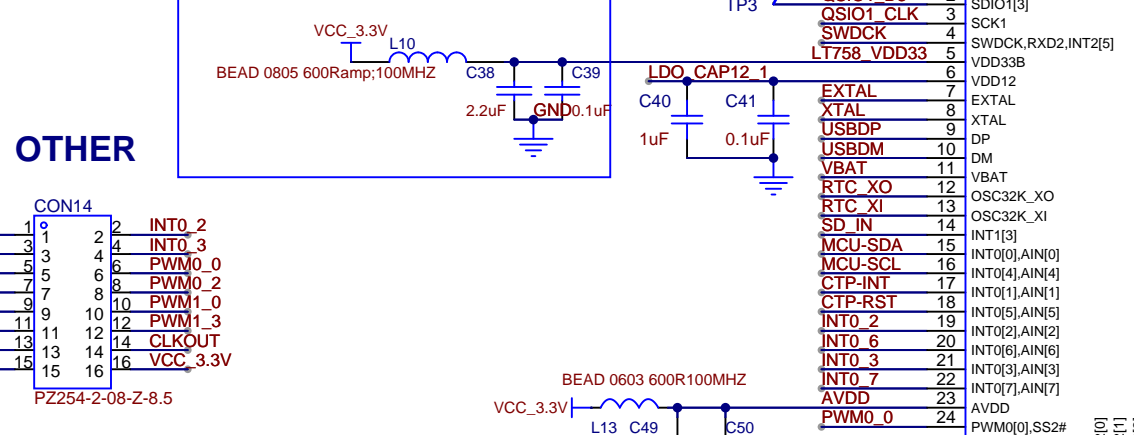
若软件部分有用到计时功能, 32.768K的电路需要加上

GUI_PLL供电

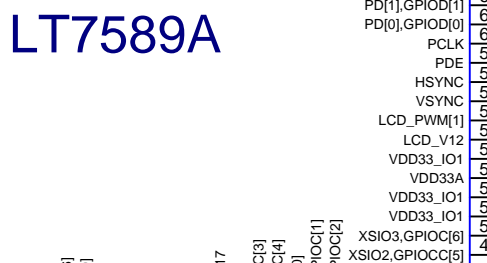


LCD_XI需要提供一个12Mhz晶振, 可以与原有的12Mhz晶振并起来。

MCU内核供电

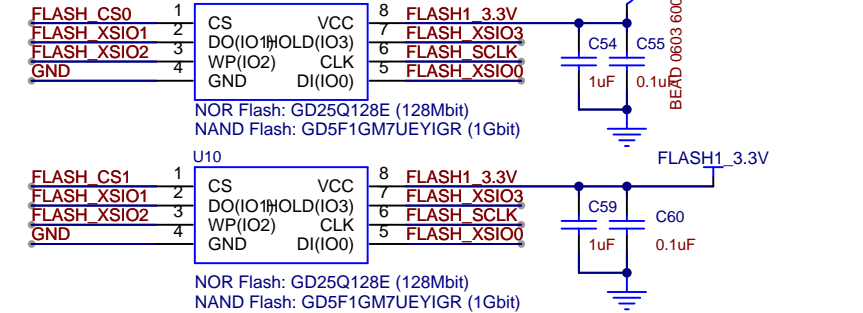


U6 LT7589A

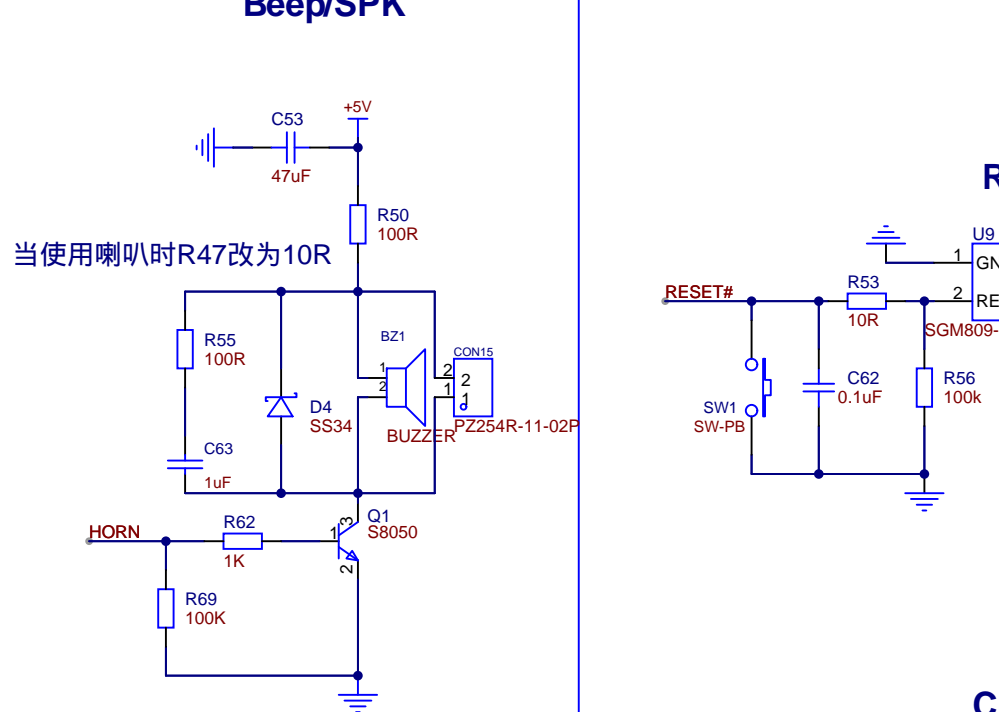


FLASH

串口屏程序默认通过CS1调用Flash, 若使用裸机开发, 可以用CS0或CS1, PCB layout时, FLASH应离LT7589A尽量近, 使用CS1调用的Flash要离LT7589A最近。

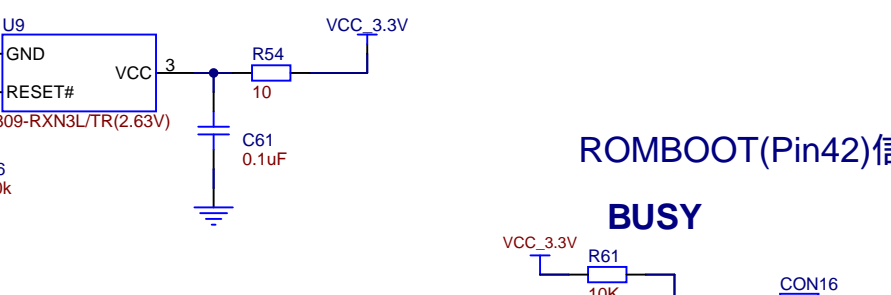


蜂鸣器/喇叭 Beep/SPK



当使用喇叭时R47改为10R

RST电路

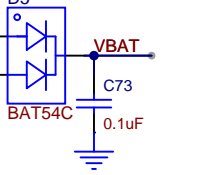


ROMBOOT(Pin42)信号脚上电期间不可为低电平, 需要接上拉电阻!

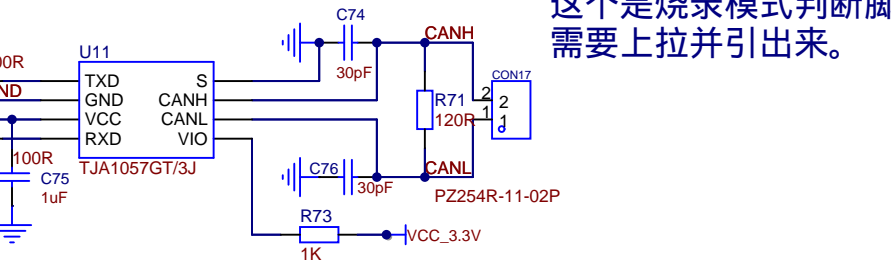
BUSY



RTC

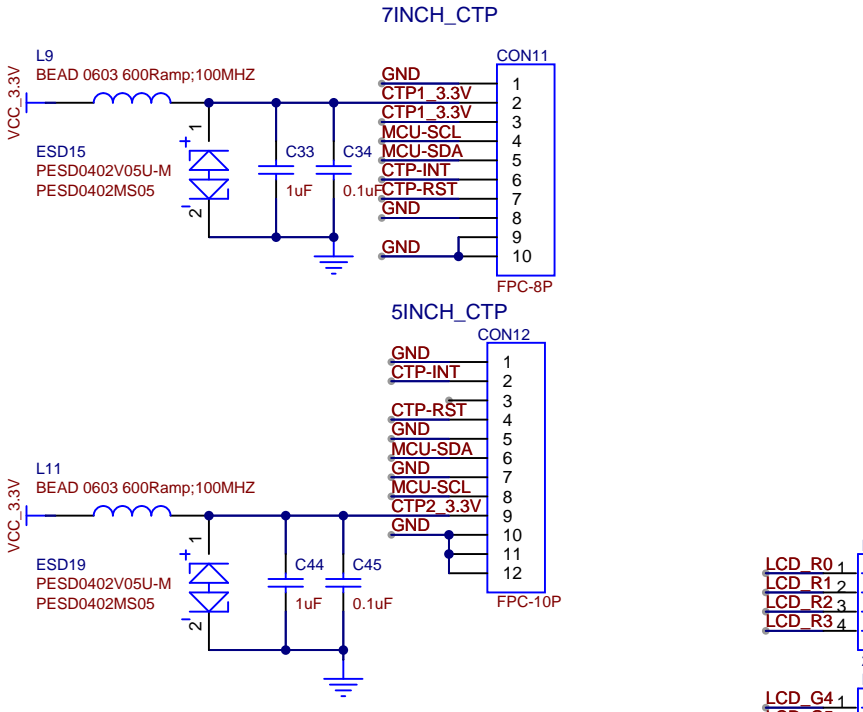


CAN(Optional)



这个是烧录模式判断脚, 需要上拉并引出来。

电容触摸屏接口



7寸 VGH, VHL 电路

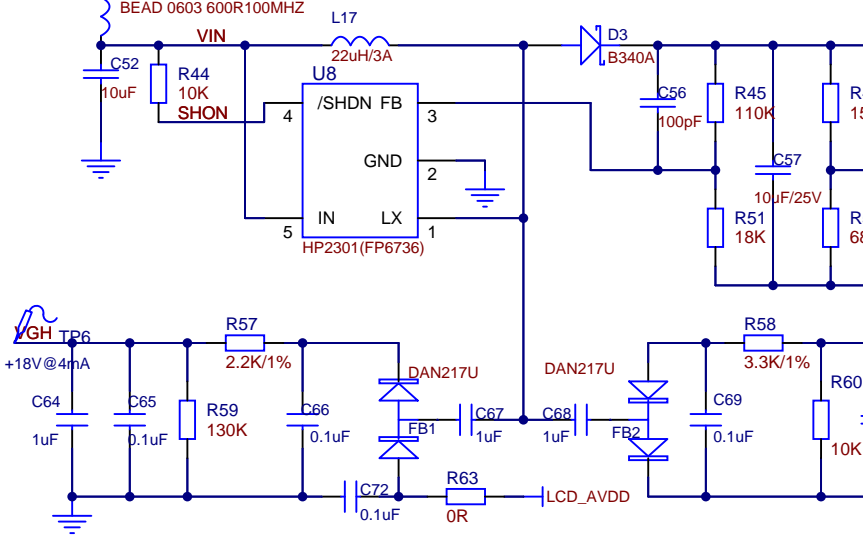


Table with 4 columns: Schematic, Page, Drawn, Reviewed, LT7589A_Demo_V1.1, Update Date, Create Date, Part Number, VER, SIZE, PAGE, OF, Levetop Semiconductor.