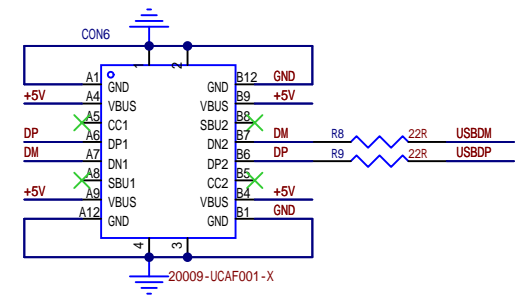
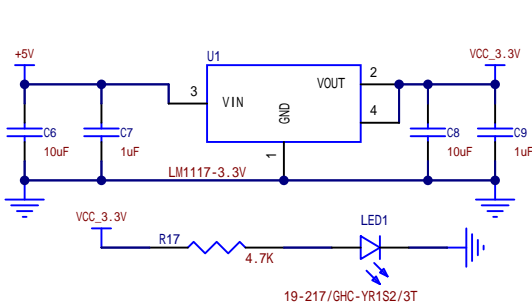


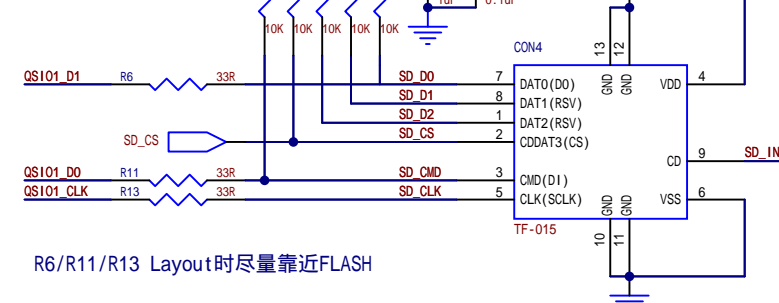
USB



5V to 3.3V

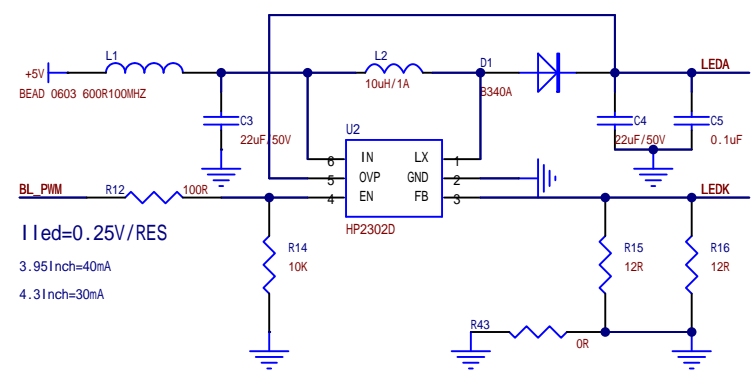


TF-Card



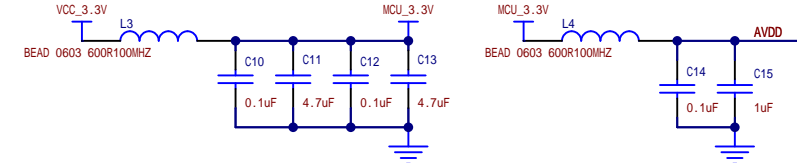
R6/R11/R13 Layout时尽量靠近FLASH

LCD-Back light

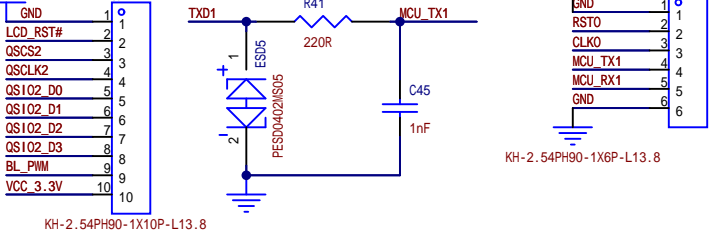


I led=0.25V/RES
3.951inch=40mA
4.31inch=30mA

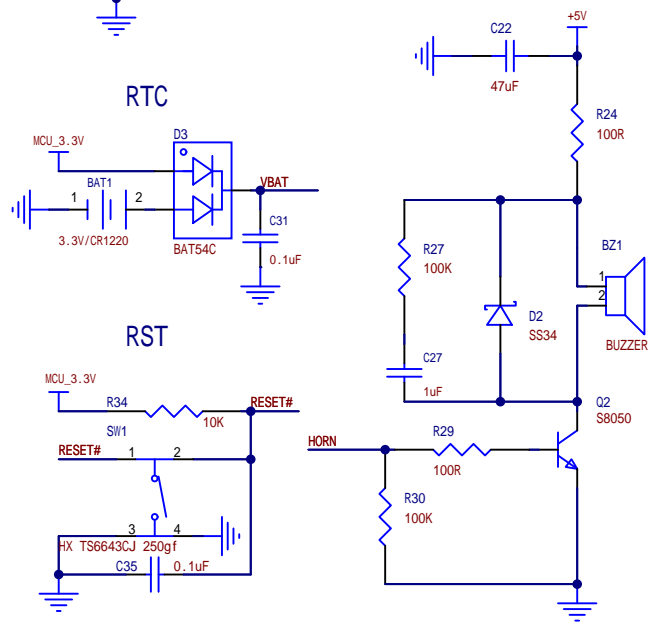
LT168B



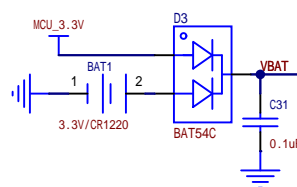
OTHER



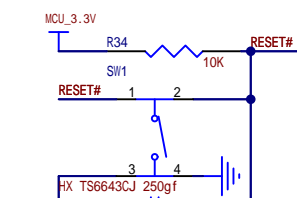
蜂鸣器/喇叭
Beep/SPK



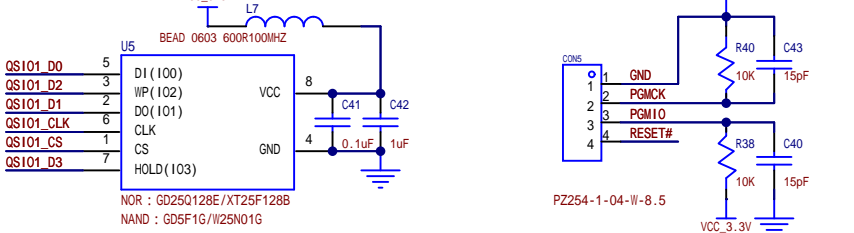
RTC



RST

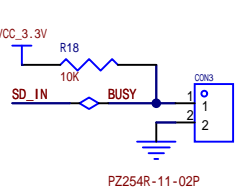


FLASH

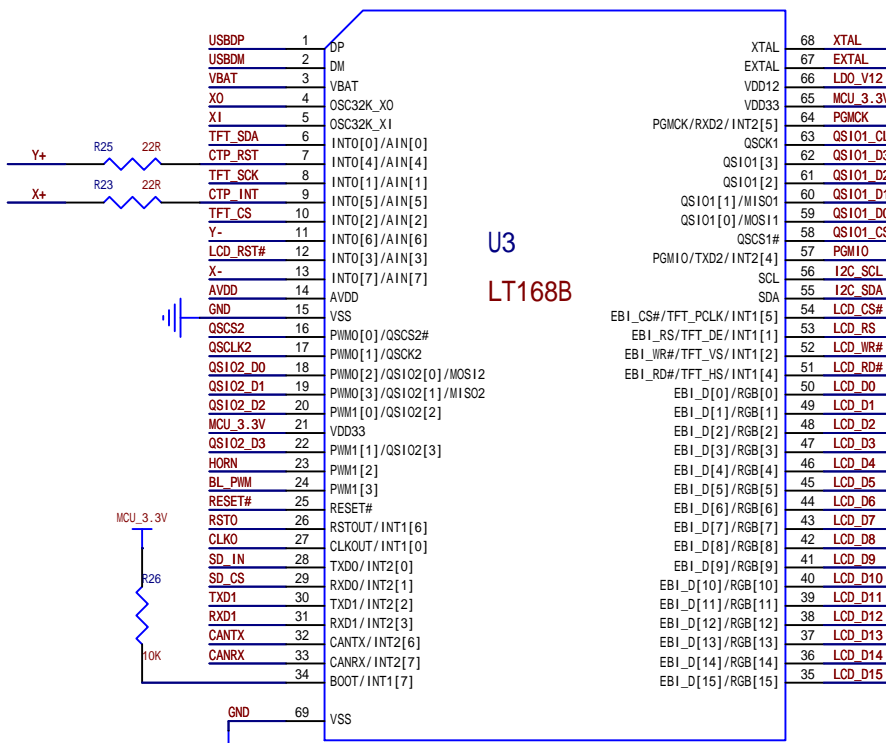
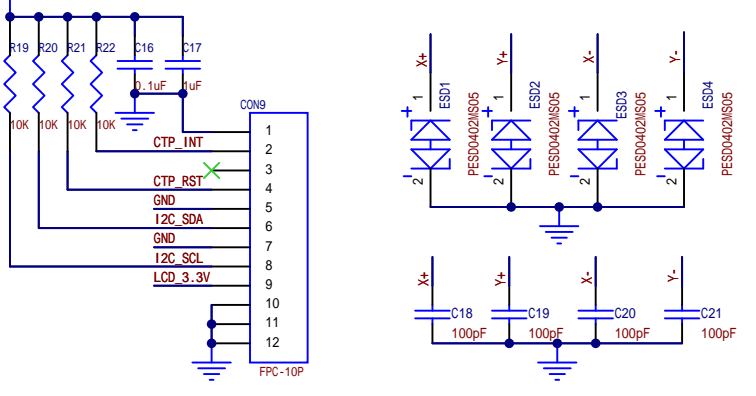


Layout时FLASH应尽量靠近LT168B

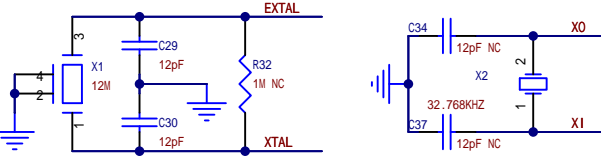
BUSY



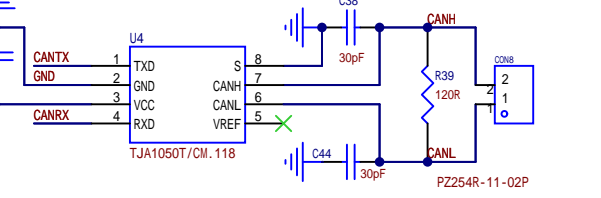
4.3INCH_CTP



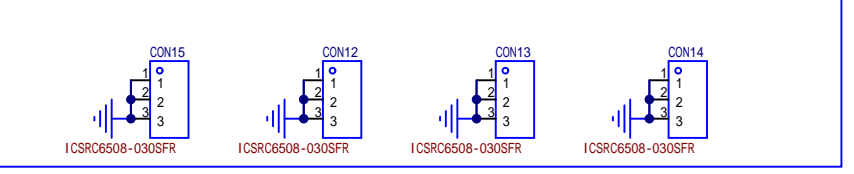
BOOT/BUSY信号脚上电期间不可为低电平



CAN(Optional)



屏蔽罩(可选)
Shielding cover(Optional)



Schematic	LT168B_Demo_V1.1		Update Date	2023-10-11
Page	LT168B_Demo_V1.1		Create Date	2023-07-12
Drawn			Part Number	
Reviewed				
VER	SIZE	PAGE		
V1.0		Levetop Semiconductor.		