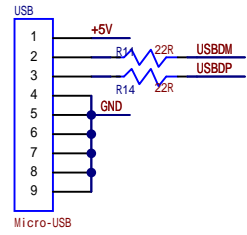
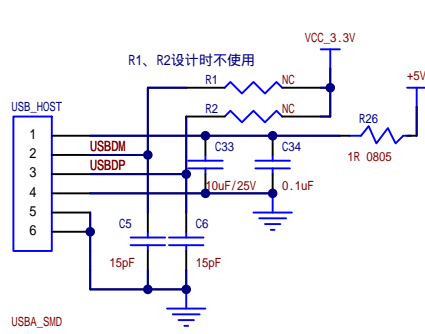


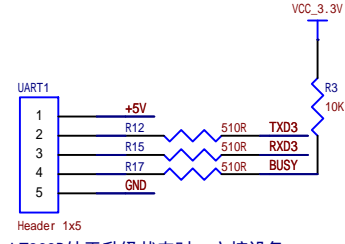
USB



U盘

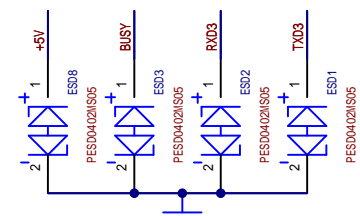
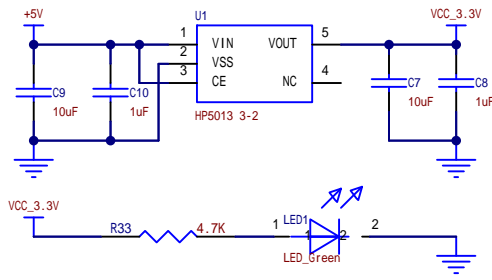
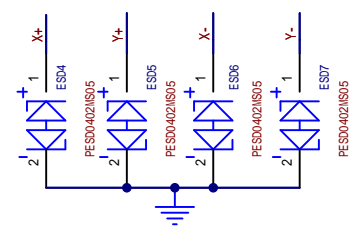
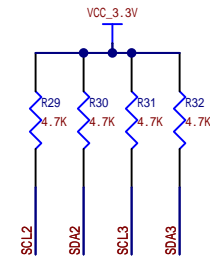
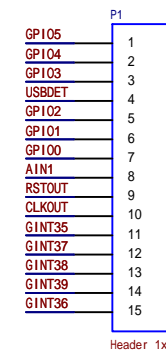
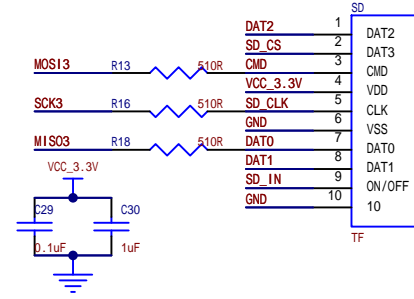
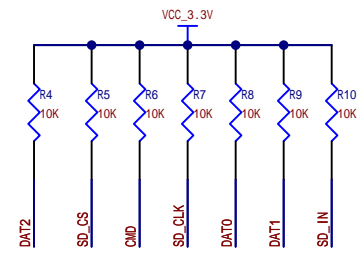


通信接口

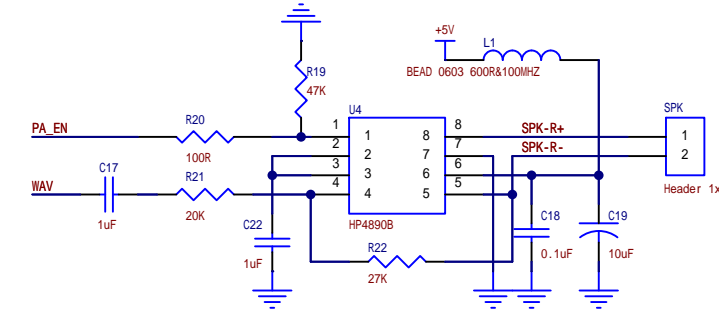


LT268D处于升级状态时，主控设备不可通过串口向其发送数据

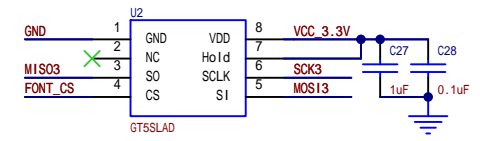
SD卡



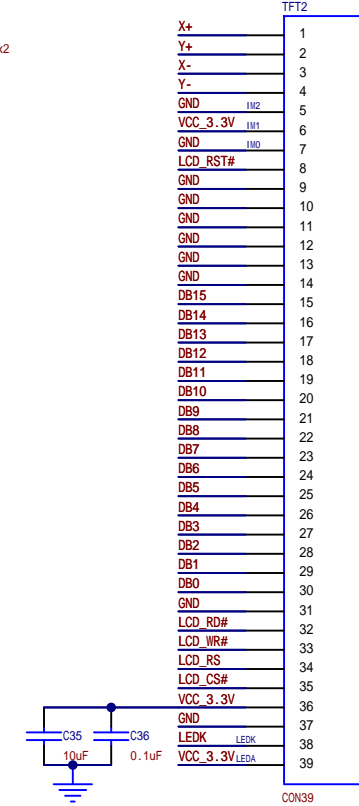
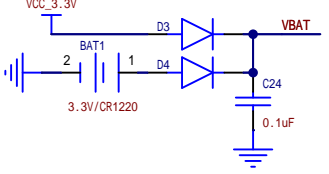
音频功放



矢量字库



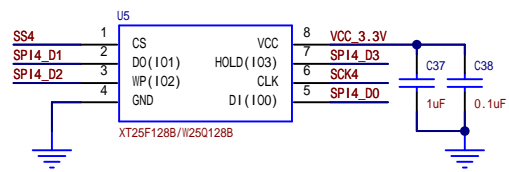
RTC



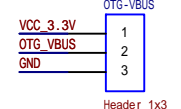
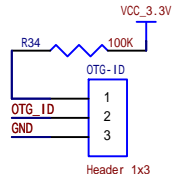
1	GPIO5	GPIO[5]/ISORST1
2	PA_EN	AMPEN/GINT[32]
3	X+	X2+/I2C_SDA1
4	X-	CTP_INT/X-/GINT[33]
5	Y+	Y2+/I2C_SCL1
6	Y-	CTP_RST#/-/GINT[34]
7	SD_CS	SPI3_CS#
8	GINT35	GINT[35]
9	EXTAL	EXTAL
10	EXTAL37	GINT[37]
11	XTAL	XTAL
12	GINT38	GINT[38]
13	DB0	DB[0]/GINT[0]
14	DB1	DB[1]/GINT[1]
15	DB2	DB[2]/GINT[2]
16	GINT39	GINT[39]
17	DB3	DB[3]/GINT[3]
18	GINT36	GINT[36]
19	DB4	DB[4]/GINT[4]
20	DB5	DB[5]/GINT[5]
21	VBAT	VBAT
22	XO	32K_XO
23	XI	32K_XI
24	GND	VSS
25	AVDD	AVDD

U3 LT268D

26	OTG_ID	OTG_ID
27	OTG_VBUS	OTG_VBUS
28	LD02_V11	LD02_V11
29	USBDM	USBDM
30	USBDP	USBDP
31	DP	DP
32	VSS	VSS
33	GINT22	GINT[22]/ADCIN[6]
34	LD02_RS	RS/SPI2_CS#
35	LD02_RD#	RW#/SPI2_CK
36	LD02_CS#	WR#/SPI2_MOSI
37	TXD2	CS#/SPI2_MISO
38	RXD2	TXD[2]
39	SCL2	RXD[2]
40	SDA2	I2C_SDA2
41	DB8	DB[8]/GINT[24]/ADCIN[7]
42	GINT23	GINT[23]/ADCIN[14]
43	DB9	DB[9]/GINT[25]/ADCIN[15]
44	LD02_BL	LD02_BL/PWM[3]/GINT[15]
45	BUSY	PWM[2]/BUSY
46	LD02_RST#	LCD_RST#/PWM[1]/GINT[13]
47	FONT_CS	LCD_RST#/GINT[7]
48	DB7	DB[7]/GINT[6]
49	DB6	DB[6]/GINT[6]
50	SPI4_D0	SPI4_D[0]



PCB layout时，FLASH应离LT268D尽量近



OTG-ID :
PC模式 : 1
U盘模式 : 0

OTG-VBUS :
PC模式 : 0
U盘模式 : 1